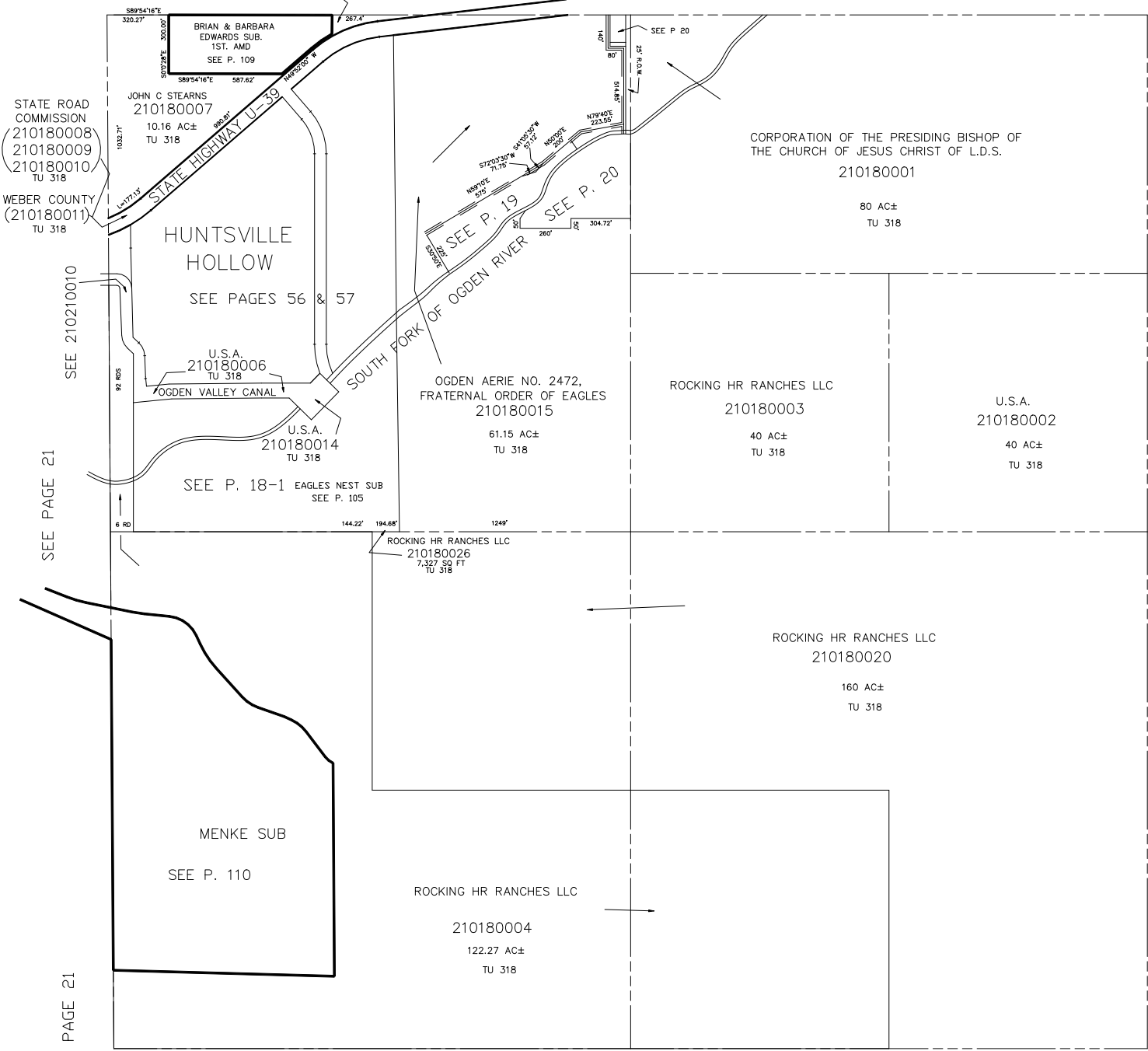


SECTION 14, T.6N., R.2E., S.L.B. & M.

IN WEBER COUNTY

SCALE 1" = 400'

TAXING UNIT: 318, 221 VERDA WRIGHT ROLLO TRUSTEE 210180012 TU 318 SEE PAGE 13



STATE ROAD COMMISSION 210180008 210180009 210180010 210180011 TU 318

WEBER COUNTY (210180011) TU 318

SEE 210210010

SEE PAGE 21

SEE PAGE 21

HUNTSVILLE HOLLOW SEE PAGES 56 & 57

U.S.A. 210180006 TU 318 OGDEN VALLEY CANAL

U.S.A. 210180014 TU 318 SEE P. 18-1 EAGLES NEST SUB SEE P. 105

MENKE SUB SEE P. 110

OGDEN AERIE NO. 2472, FRATERNAL ORDER OF EAGLES 210180015 61.15 AC± TU 318

ROCKING HR RANCHES LLC 210180026 7.327 SQ FT TU 318

ROCKING HR RANCHES LLC 210180004 122.27 AC± TU 318

CORPORATION OF THE PRESIDING BISHOP OF THE CHURCH OF JESUS CHRIST OF L.D.S. 210180001 80 AC± TU 318

ROCKING HR RANCHES LLC 210180003 40 AC± TU 318

U.S.A. 210180002 40 AC± TU 318

ROCKING HR RANCHES LLC 210180020 160 AC± TU 318

SEE PAGE 36

SEE PAGE 17